

Student Mobile Phone Management Strategy



Community
Presentation

Presenter name
Presenter title

15 August, 2023

NSW Department of Education



Education





Acknowledgement of Country



Education

We acknowledge the Traditional Custodians of the lands on which we gather today. We pay respect to Elders past, present and emerging, and extend that respect to Aboriginal and Torres Strait Islander people joining us today.

Why are we implementing this strategy?

This strategy is being implemented to increase focus and learning in classrooms, remove distractions and also promote positive social interactions.

The implementation of this strategy is a requirement under the NSW Department of Education: **Students' Use of Mobile Phone in Schools Policy**.



What does 'phones turned off and kept out of sight' mean?



If students choose to bring their phones to school, they will be required to switch them off and keep them out of sight during the school day.

This applies both in the classroom, and at recess and lunch times, as well as throughout all school activities.

How will the 'phones turned off and kept out of sight' strategy work?

1

Each morning your child will be required to switch their mobile phone off before entering the school grounds.

2

The mobile phone will then need to stay out of sight throughout the day and cannot receive or send calls or messages.

3

Your child retains responsibility for their mobile phone.

4

After leaving the school premises, your child is able to switch on their mobile phone.

Key questions

We know this is a big change and we are here to answer your questions!

But first, let's go through some commonly asked questions.



What if I need to contact my child?

A call can be placed directly to the school in an emergency.

Who is responsible for the mobile phone?

As your child retains their mobile phone throughout the day, they remain responsible.

Are there any exemptions?

Exemptions will be made for mobile phones that are required for medical or learning requirements.

What devices are covered as part of this strategy?

Mobile phones are the focus.

What will happen if my child does not comply?

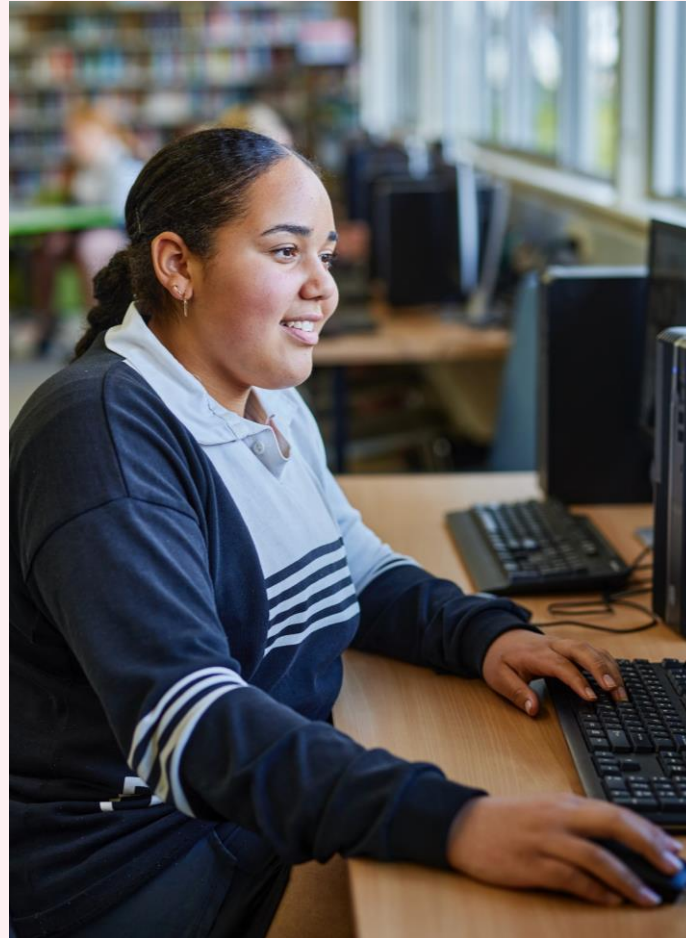
The school's existing Student Behaviour policy and procedures will be applied to your child.

What about school excursions?

The mobile phone management strategy applies to school excursions and events, unless an exemption is made by the principal. If this is the case, information will be included in the excursion permission form.

How can you help?

- Discuss the mobile phone management strategy with your child.
- Remind them of their role in the process.
- Raise any questions or concerns with the school team.



Next steps

- We will be sending a letter home with your child detailing all the finer details of the strategy.
- If you need any further clarification on this strategy you can contact the school office.
- This strategy will be implemented at the beginning of Term 4.

