

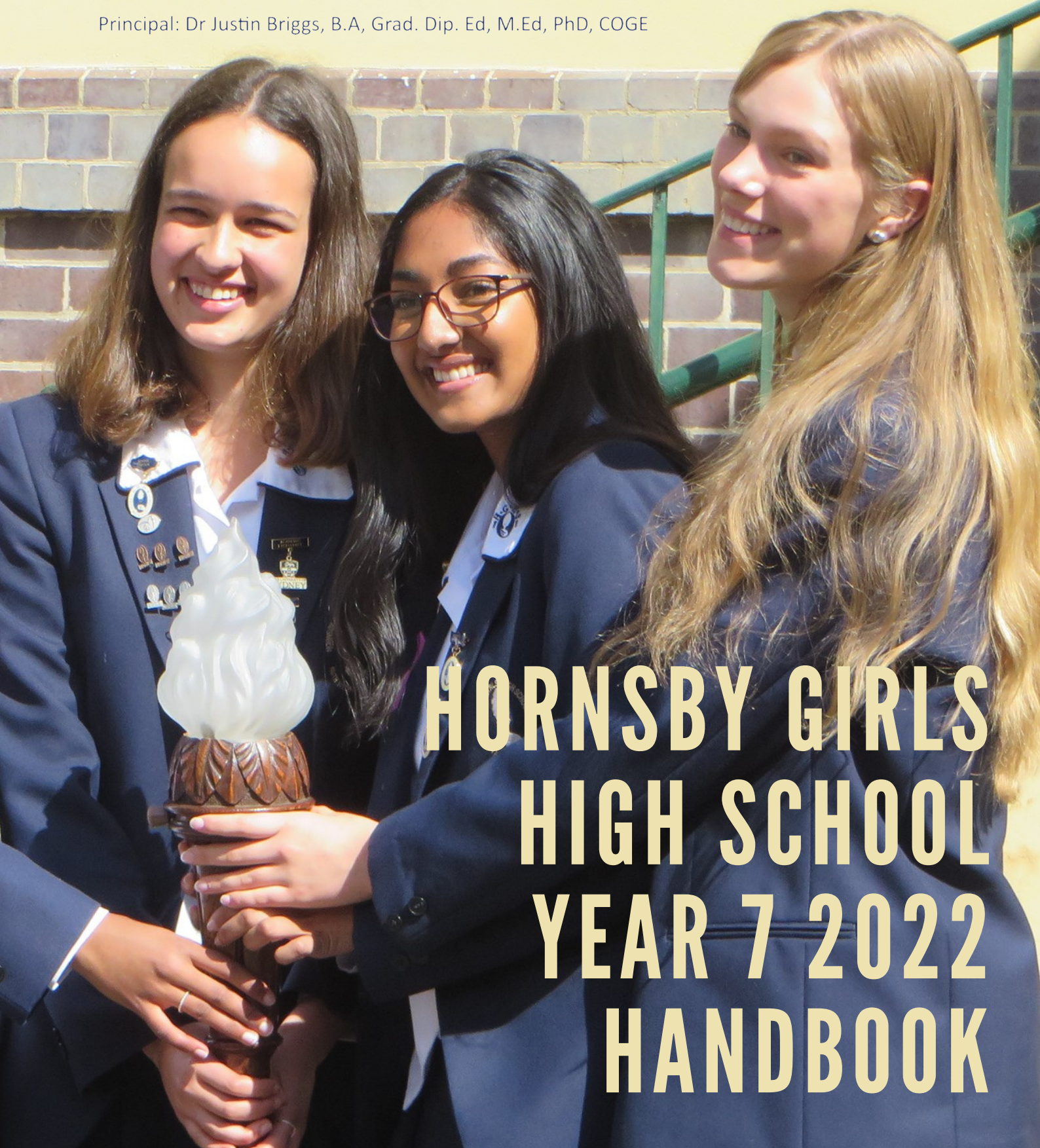


**HORNSBY GIRLS HIGH SCHOOL**

Excellence in Girls' Education

- 📍 Edgeworth David Avenue, Hornsby, NSW 2077
- 🌐 <http://www.hornsbygir-h.schools.nsw.edu.au>
- ✉ [hornsbygir-h.school@det.nsw.edu.au](mailto:hornsbygir-h.school@det.nsw.edu.au)
- ☎ (02) 9476 5711

Principal: Dr Justin Briggs, B.A, Grad. Dip. Ed, M.Ed, PhD, COGE



# HORNSBY GIRLS HIGH SCHOOL YEAR 7 2022 HANDBOOK

## **Hornsby Girls High School is committed to “Excellence in Girls’ Education” through Positive Education**

We aim to cultivate students’ intellectual, socio-emotional and physical wellbeing through a curriculum that fosters a broad set of character strengths, virtues and competencies which work together to create engaged, resilient, flourishing students.

### **Hornsby Girls encourages students to thrive, connect and succeed in an enabling school by:**

- Extending students to their full potential
- Providing students with a diverse range of educational opportunities and experiences
- Developing students as responsible and successful leaders and members of the community
- Responding to the social, physical and emotional needs of the students.

### **At Hornsby Girls High School:**

Students have opportunities to achieve excellence in a diverse range of curricular and extra-curricular arenas including Academic, Cultural, Artistic, Sporting, Social and Community.

- Students have opportunities to achieve their maximum potential in an environment where individual gifts and talents are identified, valued and developed.
- Students operate within an enriching learning environment, which fosters their autonomous decision-making, independent and lifelong learning skills and promotes confidence in themselves.
- Students have opportunities to develop leadership capabilities and proactive thinking resulting in responsible action.
- Students operate within a school environment that encourages knowledge and skilful use of contemporary technological advances across the whole curriculum.
- Students operate within an ethical school community, which values individual achievement balanced with mutual respect and a spirit of cooperation to achieve both individual and school community goals.
- Our school values, developed by the students and staff are: Personal Bests, Intellectual Curiosity, Social Responsibility, Kindness, Inclusivity, Resilience and Respect.

# Principal's Message

Dear Students and Parents,

Welcome to Hornsby Girls High School.

Our school began its life as a Selective High School for girls in 1930.

Our strong tradition in academic and extra-curricular achievements is well known and our reputation continues to grow. We are proud to offer our students an academic education of the highest quality, along with numerous cultural, sporting and social opportunities.

With a caring and committed staff and a disciplined, yet relaxed atmosphere, our students study within the framework of security, confidence and self-development, allowing them to prepare for the challenges of the future.

Our Vision Statement is "Excellence in Girls' Education". We strive to develop each student to her full potential through the many programs and projects available.

Hornsby Girls High School has achieved many successes not only because of the collaborative spirit that exists, but also because of the many opportunities for all students to develop their diverse talents and interests.

We encourage our students to strive for excellence in their academic pursuits and to enjoy the many extra-curricular activities available.

Our P&C Association is very active in support of the school, and we encourage parental and community participation in our school as much as possible. Additionally an active Old Girls' Union ensures that our traditions continue.

Yours faithfully,



Dr Justin Briggs  
Principal



## *Deputy Principals' Message*

Starting at a new school is a very exciting time and you will experience different routines, new teachers, new surroundings and, of course, new friends. In a high school there are many more members of staff to meet and these people will often hold positions of responsibility which are new to you.

A Student Year Adviser is one such new position, which does not exist in primary schools. You will soon find that this person will be of great support to you and will be readily available to answer questions and give advice.

Our school also has a Student Support Officer (SSO), Mel Court-Gold. Please use her first name Mel when speaking with her or asking for her at the office. She is more than happy for you to use her first name. Mel works in partnership with the Wellbeing Team to deliver wellbeing programs and provide support for individual student wellbeing. If you need any wellbeing support, please make contact with Mel. During your Year 7 Transition Program, you will meet Mel and learn the location of her office.

The Year 10 Peer Support Leaders will also be helpful as they have been in the school for several years and still remember how it felt to be new. Perhaps some of you have come from a Primary School in which the Peer Support system operated; perhaps some of you have even been Peer Support Leaders yourselves. Whether or not you are familiar with the scheme, we are sure you will find it of value.

As Deputy Principals, a large part of our time is spent with the day-to-day running of the school. Along with this, we work very closely with the staff to ensure that students settle in as quickly as possible. We are pleased to meet with students in our office or in the playground during breaks to discuss any matters that may arise. It will be some time before we meet with everyone individually, however, we will be speaking to you all as a group.

We hope you are looking forward to the challenges and the many opportunities that this school has to offer.

Welcome to Hornsby Girls High School.

*Susan Green and Doug Marshall*

Dr Susan Green and Mr Douglas Marshall  
Deputy Principals



# Year 7 Adviser

Dear Students and Parents,

Welcome to Hornsby Girls High School.

My name is Ms Koumoundouros, and I am the Year 7 Adviser for 2022. My role is to support and assist you during your time as a member of our wonderful learning environment. I am also an English teacher, so I will have the pleasure of teaching some of you throughout your time at our school.

I will be your first point of contact for your next six years at Hornsby Girls High School. I will be available to guide you through a range of different situations, from locating your way around the school to supporting your overall well-being. It is my responsibility to ensure that your questions are answered and that you feel at home.

Although starting this new chapter of your life can be a very daunting experience, I hope you remember that your feelings of uneasiness will eventually pass, and you will soon take part in the many interesting opportunities available to Year 7 students at our school.

On your first official day of high school next year, you will participate in an engaging transition program where you will be able to introduce yourself to your peers and meet some of your teachers before you start your timetabled lessons. You will also have the opportunity to attend Year 7 camp towards the end of Term 1, where you will challenge yourself in adventurous activities, create lifelong memories and forge friendships with your fellow Year 7 students. There are many things happening in the near future for you to look forward to.

I am thrilled to be your Year Adviser, and I am so excited to see you take your first steps into your new journey at Hornsby Girls High School.

*Melina Koumoundouros*

Ms M Koumoundouros  
Year 7 Adviser 2022



# OUR SCHOOL BADGE - THE TORCH

The Torch was chosen as the badge for our school because it represents the "enlightenment of knowledge" as our students strive for excellence and personal growth.

The tradition of the School Captain and Head Prefect passing on the Torch to successive years is a deeply symbolic aspect of our annual Speech Day.



## OUR SCHOOL MOTTO -

*“Faith with Fortitude”*

The School motto was chosen in the foundation year of Hornsby Girls High School.

At our school, **Faith** is seen as a personal quality – namely faith in yourself, in the teachers and in the school. More generally, the concept of faith in human nature, in spite of human weakness, is also an important part of our belief.

**Fortitude** is strength, especially strength of character, even in the midst of adversity when we need to find the resilience to face all life’s challenges.

Our motto identifies two values, which should be lifelong ambitions. These values are as relevant today as they were in the founding days of the school.

## OUR SCHOOL VALUES

In 2019 the SRC developed, in consultation with the senior executive, seven school values. These values help to guide the whole school in the understanding of Positive Education and the practical applications of Positive Education for each student.

**Our school values are:**

Personal Bests, Intellectual Curiosity, Social Responsibility, Kindness, Inclusivity, Resilience and Respect.

In SWL-Being (our student led wellbeing lessons) each session focusses on one of our school values in order to provide a practical application within our school community.

Personal Bests

Intellectual Curiosity

Social Responsibility

Kindness

Inclusivity

Resilience

Respect

# SCHOOL ADMINISTRATION

## Address

Edgeworth David Avenue  
Hornsby NSW 2077

## Telephone

(02) 9476 5711

## Email

[hornsbysgir-h.school@det.nsw.edu.au](mailto:hornsbysgir-h.school@det.nsw.edu.au)

## School Hours

Monday, Tuesday, Thursday and Friday:

8:45am to 2:50pm

Wednesday:

8:45am to 2:40pm

# SCHOOL WEBSITE

The School's web address is:

<https://hornsbysgir-h.schools.nsw.gov.au/>

The website is regularly updated and contains information about the school including: Curriculum, Uniforms, Enrichment Activities, Co-Curricular Music Program and our fortnightly newsletter, The Torch.

A Calendar of upcoming events is easily accessed from the home page.

It is worthwhile bookmarking the web address.



# SCHOOL NEWSLETTER

The Torch, our school newsletter, is distributed to the school community electronically each fortnight and is the major communication link between the school and parents.

It contains the Principal's and Deputy Principals' reports, information and advertising about school events, reports on such school activities as excursions, theatre visits, musical activities, art exhibitions, Student Showcases, debating and sporting events.

Student achievements, both in and out of school, are recognised in The Torch. There are reports from the Prefects, the SRC, the P and C and the Old Girls' Union as well as regular updates on the school calendar of events so that parents can keep abreast of activities that are relevant to them.

# PREFECTS

At Hornsby Girls High School we operate a Prefect system, which is part of our Student Leadership Program.

Each year the student body elects 18 Prefects, who in turn elect a School Captain, Vice-Captain and two Senior Prefects.

**Our 2022 School Captain is Penelope Brown, the Vice-Captain is Prisha Desai and Senior Prefects Rose Mitsui & Tanaya Subramanian.**

The Prefects are the leaders of our student body, elected to represent the students and to uphold the standards and values of the school.



## STUDENT WELLBEING LEADERS (SWL)

SWL-Being is a fundamental part of our school's Positive Education Program, in which all students come together once per fortnight to focus on fostering a culture of wellbeing at Hornsby Girls.

SWL-Being aims to explore our school values, which are critical to unity, connection and becoming a global citizen beyond school.



## STUDENT REPRESENTATIVE COUNCIL (SRC)

The Student Representative Council (SRC) consists of four to five representatives from Years 7-9. A further eight students are elected from Years 10 and 11. President and Vice-President of the SRC are chosen from this group.

**In 2022, Dorlan Xiao is Head of SRC and Reeva Basnet Deputy Head of SRC.**

The aim of the SRC is to provide students with opportunities to develop their skills in student leadership. To this end, meetings are held regularly at school where the students discuss and action important issues.

Year representatives also enjoy contact with students from SRCs at other schools by attending forums, workshops, meetings and conferences.



# AGNES BREWSTER MEMORIAL LIBRARY

The Library is named after Miss Agnes Brewster, first Principal of the school from 1930 to 1938. The Agnes Brewster Memorial Library holds a large collection of resources to support the curriculum.

The collection consists of over 20,000 titles to support the teaching and learning programs in the school. There is an extensive Fiction Collection as well as other recreational resources to encourage wide reading.

The Library Catalogue is an online catalogue, available both at school and at home. Students can search for resources, view their current loans, reserve books, renew books, and write book reviews for others to read. Links to online digital resources are also on the homepage of the Catalogue.

Computers are available for individual or class use, providing access to the Internet, scanning and printing facilities, as well as many software applications.

The Library has a subscription to Wheelers ePlatform for eBooks and an Audiobook subscription. These are available to be read on any device at any time. Access is through the link on the online Library Catalogue.

The Library has subscriptions to several **online resources** that may be accessed at school and at home, these include:

- The Australia/New Zealand Reference Centre
- Cambridge Collections Online
- ClickView
- Issues in Society Digital Editions
- Online Referencing Generator
- AustLit



## **Borrowing**

Students in Years 7-10 may borrow up to 20 fiction and 20 non-fiction resources at one time. Students in Years 11-12 may borrow up to 30 fiction and 30 non-fiction resources in addition to all English texts. The normal loan period is two weeks. Resources may be reserved. Renewals may be made where another student has not reserved the item. Books may also be borrowed for all school holiday periods. There is no limit on the number that may be borrowed for these times.

**Games** such as Scrabble and Chess are available at the Library Desk.

**Book Groups** operate during lunch times. Students who love to read are encouraged to come along and share their love of books in informal and fun meetings.

## **Premier's Reading Challenge**

Year 7 students are encouraged to participate in the Premier's Reading Challenge as part of the Wide Reading Program in English. This is an excellent way of setting a reading goal and enjoying quality literature.

## **Library Hours**

**7.30am to 4.45pm - Monday to Thursday**  
**8.30am - 2.50pm - Friday**

# STUDENT WELLBEING



## **Student Wellbeing Team**

The Student Wellbeing Team comprises the Deputy Principals, Head Teacher Student Wellbeing, Year Advisers, Learning and Support Teacher, Student Support Officer and the School Counsellor. The team meets weekly to discuss students needing support and develop strategies to support students. All members of the group are dedicated to assisting students who may have short or long-term difficulties that are impacting negatively on wellbeing and school performance.

## **Learning and Support Meetings**

These are held as required to discuss and develop individual learning and management plans for students identified as needing extra support for learning, health or social needs. The Head Teacher Student Wellbeing and Learning and Support Teacher coordinate this support.

## **School Counsellor**

The School Counsellor is a Psychologist who is available to help individual students with personal and educational problems. The School Counsellor may be accessed through student self-referral or parent referral.



## **Student Wellbeing Sessions (SWL-Being)**

SWL-Being is a Positive Education Program designed to address the key principles of Positive Education and other relevant student wellbeing issues. It encourages student voice and leadership through interactive discussion and activities. Key topics addressed are mindfulness, gratitude, kindness, positive thinking, sleep for health and healthy lifestyle choices.

## **Peer Support**

Peer Support is a long standing Positive Education Program at Hornsby Girls High School and involves Year 7 and Year 10 students. Year 10 students participate in a 2-day training course to enable them to lead a small group of Year 7 students through their first weeks of High School. Students attend Peer Support sessions weekly during Term 1 and Term 2 on a cyclic withdrawal system. The sessions focus on such topics as strengths, mindfulness, positive thinking, communication, networks of support, clarifying personal values and developing confidence and trust. The scheme has always been evaluated by all participants as highly successful and makes the transition from Primary to Secondary School easy and enjoyable.

## **Hornsby Girls High School Outdoor Education Programs**

A range of outdoor education and camping programs support the learning of students at Hornsby Girls High School. Student Wellbeing and Leadership camps in Years 7, 9 and 11 aim to develop friendship and year group cohesion providing exciting opportunities for students to challenge themselves in safe and enjoyable, professionally supervised activities. Field trips in various KLA areas e.g. the Central Coast for Year 8 students, further enhance the learning and social development of our students while providing key components of syllabus areas.

# SOME ADMINISTRATIVE MATTERS

**Students can access the Office and Reception before school, at recess and at lunchtime.**

## **School Opal card**

The School Opal card gives eligible school students free or subsidised travel on public transport between home and school on trains, buses, ferries and light rail in the Opal network. Opal cards can only be used for travel to and from school.

**Parents need to complete an online application form via:  
<https://www.opal.com.au/en/about-opal/opal-for-school-students/>**

You only need to make a new application if you are applying for a School Opal card for the first time or requesting an additional pass as a result of a new shared parental responsibility (joint custody) situation. You need to update your application if you have a current School Opal card and your circumstances change, e.g. change of school or home address. Once approved, the School Opal card will be sent to the home address provided on the application in January.

## **Excursions, Money**

All permission notes and money for excursions and sport will be collected through the Bank during the opening hours. Receipts will be issued. NO money can be receipted without the appropriate slip – signed by parent/caregiver. **Online payments can be made by accessing the school website.** Student registration number is not required to make a payment. Permission note with receipt no. must be brought to the office.

## **Payments**

School Fees, Year 7 Orientation Camp and uniforms may be paid for by cheque, cash, credit card or online. If paying by cheque please make the cheque payable to Hornsby Girls High School. School Fees were outlined in an email previously sent out. This information is also available on our website.

## **Illness**

If students do not feel well during class, it is necessary for them to bring a note from their teacher to Reception. A text message will be sent to parents when they present to sickbay. Students who are unwell can rest in sickbay for half an hour. Parents will be contacted to collect the student from the school if they are not well enough to return to class or if they have an injury that needs attention. Junior students are not permitted to travel home alone when unwell or injured. It is imperative that parents provide the school with an alternative emergency contact. Please notify the school of any change of address or contact phone numbers. School staff have no authority to dispense ANY medication to students.

## **Telephone**

Only in emergency situations can messages from parents to students be handled by the office staff, and only with the approval of the Principal.

## **School Canteen**

The School Canteen operates five days of the week for the benefit of students and staff.

## **Parents' and Citizens' Association**

Meetings are held on the third Wednesday of each month from 7:30pm until 8.30pm in the Staff Common Room. The Parents' and Citizens' Association Contribution fund is \$200.00, or \$225.00 if there are two or more students in the family.

# ABSENCES

## Student Absences

Parents are requested to notify the school if a student is going to be absent or arrive late, by phone on **9476 5711** or by email –

**hornsbygir-h.school@det.nsw.edu.au**

An SMS system to communicate student absences is used by the school. If a student is late or absent, and the school has not received notification then an SMS will be sent to notify the parents. Parents can then respond to the SMS with a clear message detailing reason for absence/lateness.

Parents who do not reply through the SMS system must send a written explanation the day following the lateness/absence to the school office.

## Late Arrivals

Students arriving late must swipe on to the Attendance Monitoring System in the office upon their arrival at school. They will obtain two slips from the swipe machine. One is to be given to the student's class teacher. The other is to be completed and signed by the student's parent/caregiver explaining the reason for the lateness, and handed into the school office on the following school day.

## Early Departure

A student wishing to leave early must report to the Deputy Principal/s between 8:30am and 8:40am with a letter stating the reason and have their early departure approved. Students are required to report to the office at the time of leaving and have the actual time of leaving recorded on the Student Attendance Monitoring System.



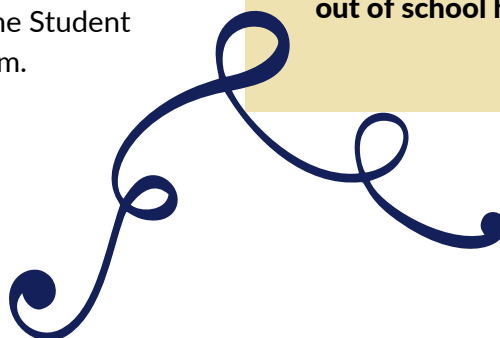
## Temporary Leavers

Students wishing to have leave in excess of five school days during the school term must bring a letter from their parent/caregiver to the Deputy Principal/s. Extended leave requires formal approval from the Principal and a Department of Education Notice of Exemption – so several weeks' notice must be given when applying. The School requests parents do not organise overseas holidays during school terms.

## Leaving School

The student is to bring a note from her parent/caregiver and present it to the Deputy Principal, if permanently leaving the school. The Deputy Principal will issue a Leaver's Form in order to assist the return of textbooks, equipment etc.

**Parents are reminded that student medical and other appointments should be made out of school hours.**



# SCHOOL UNIFORM

## JUNIOR SCHOOL UNIFORM - YEARS 7 - 9

### Summer Uniform

- Fawn dress with navy stripes or navy pants or shorts with school initials.
- White Junior short sleeve shirt with school initials.
- Navy V-neck pullover jumper with fawn stripe, available in wool or cotton blend.
- Navy cardigan with school crest, available in wool or cotton blend (optional).
- Navy school blazer.
- Navy jacket.
- White fold over ankle socks.
- Shoes - regulation school shoes, black, lace up leather.

### Winter Uniform

- Navy tunic with fawn pin stripes or navy pants with school initials.
- White long sleeve shirt with school initials.
- Navy V-neck pullover jumper with fawn stripe, available in wool or cotton blend.
- Navy cardigan with school crest, available in wool or cotton blend (optional).
- Navy school blazer.
- Navy jacket.
- Navy school scarf.
- Black tights; white fold over ankle socks.
- Shoes - regulation school shoes, black, lace up leather.



### Sports Uniform

- Navy and white polo shirt with school crest.
- Navy sport shorts with school initials.
- Tracksuit - navy and white top and pants with school crest.
- Socks - white sports style.
- Gym shoes / running shoes - black or white.
- Navy sports cap with school initials - available from the Clothing Pool.
- Sunscreen is recommended for outdoor activity.

### Food Technology Uniform

A white apron and cap, suitable for wearing over school uniform (available from the Clothing Pool).

## CLOTHING POOL

The Clothing Pool is open from **8:00am to 9:00am** every **Tuesday** morning.

### New items available for sale:

School hat, Food Technology uniform & cap, school sports cap, school scarf, school jumper and cardigan (wool & cotton blend), school backpack and school sports bag.

### Second-hand sales:

Second-hand uniform items as available.

**New uniforms, sports uniform and blazers are available at Lowes Hornsby.**

# CURRICULUM

The curriculum studied by Year 7 students in 2022 will include the following subjects:

- English
- Mathematics
- Science
- History
- Geography
- Languages
- Visual Arts
- Music
- Design & Technology
- Physical Education / Health / Personal Development
- Sport



The program in Year 7 is designed to provide all students with a wide range of educational experiences. An outline of all subjects follows.

## ENGLISH

**Year 7 English concentrates on developing students' skills in areas of reading, writing, listening, and speaking. In 2022 students will be arranged in four parallel classes.**

All students will study fiction, poetry, film, drama, picture books, and speeches. All students will be encouraged to read widely to develop their appreciation of a variety of texts in a range of modes.

Year 7 students will take part in public speaking, social debating, creative writing club, and they will enter their work in the Old Girls' Union creative writing competition.

During the year excursions, which provide students with experience in Drama, will be organised, either in or out of school.

Students should expect regular homework and should realise that its completion is mandatory.



# MATHEMATICS

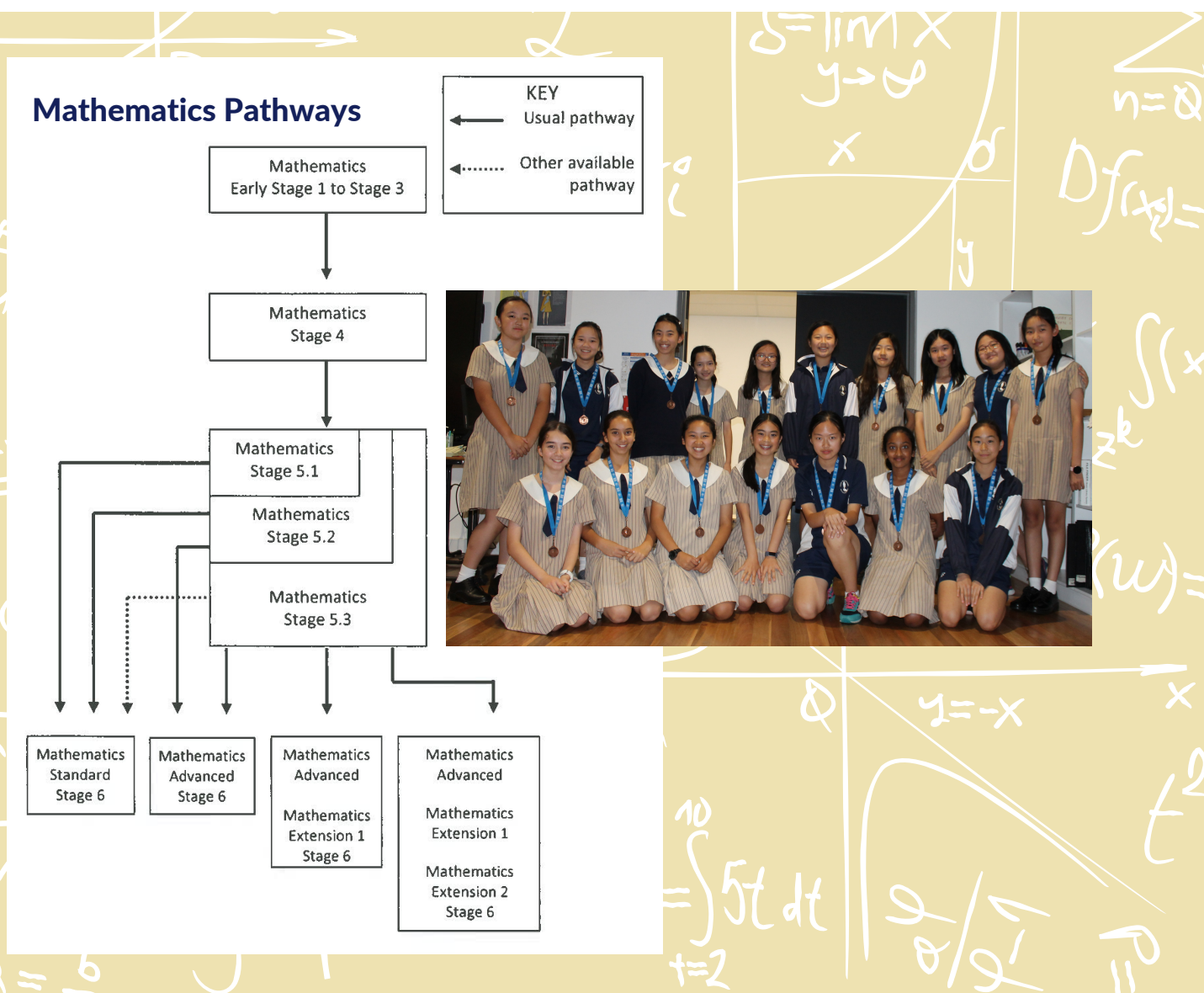
The Junior Mathematics syllabus in NSW secondary schools consists of stages. Stage 4 is essentially taught in Years 7 and 8 and Stage 5 is essentially taught in Years 9 and 10.

Both stages contain three content strands: Number and Algebra; Measurement and Geometry; and Statistics and Probability.

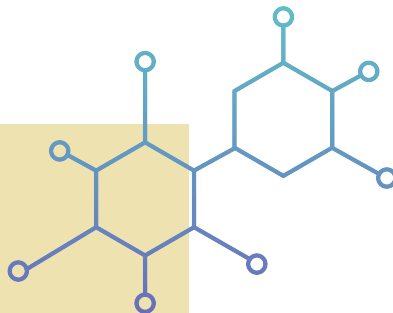
In addition, there is a process strand, Working Mathematically, which is interwoven within the other five strands. It is anticipated that all students will achieve all of the Stage 4 outcomes by the end of Year 8 and the majority of students will achieve all of the Stage 5.3 outcomes by the completion of Year 10. See the pathways flowchart below.

The Year 7 Mathematics program includes technology integrated into the Mathematics lessons where students explore mathematics knowledge using technology, while developing relevant ICT skills.

The Mathematics classes in Years 8, 9 and 10 are partially graded. In addition to regular lessons and associated homework, students will be given extension and enrichment work. All students will be entered into the Australian Mathematics Competition and given the opportunity to participate in the Australian Mathematics Challenge Series and other selected competitions.



# SCIENCE

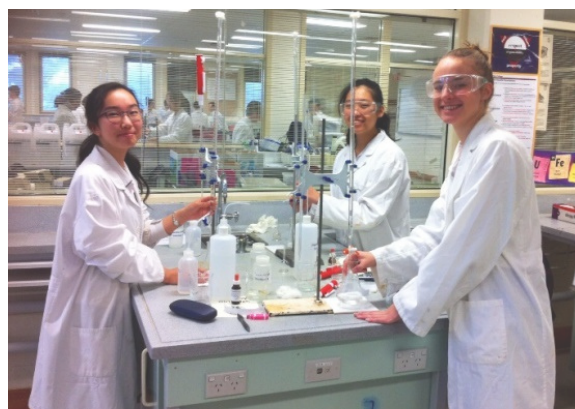


The study of Science in Year 7 builds on the knowledge and skills gained by the students in their primary schooling. It further develops students' scientific knowledge and understanding, skills and values and attitudes within broad Science topics, which include a blend of the traditional disciplines of Physics, Chemistry, Biology and Earth Sciences.

As well as acquiring scientific knowledge and skills, students apply their understanding to everyday life and develop an appreciation of science as a human activity. Students learn about the need to protect, conserve and maintain the environment, the use and importance of technology in advancing science and the role of science in developing technology.

All students will be entered into the UNSW ICAS Science Competition will also be given the opportunity to participate in the RACI Chemistry Quiz and other external competitions.

Students will be assessed through a range of strategies, which allow them to demonstrate their achievement of the course outcomes in a variety of ways.



# HUMAN SOCIETY AND ITS ENVIRONMENT (HSIE)

## HISTORY

### Outline of Year 7 Course

The History faculty has designed a variety of exciting topics where students will delve into the mysteries of the past. This course covers the development of student skills in the use of sources and the processing of information. The course is designed to arouse empathy with the personalities of the past, and to incite curiosity and a love of history.

### Special Requirements

A sense of adventure and discovery, an enquiring mind and a determination to improve individual skills and understanding.

### Topics Studied

- **Investigating the Ancient Past:** In this topic we explore questions such as: How do we know about the past? What is the role of archaeology? Why did societies develop? What was Ancient Australia like?
- **The Mediterranean World:** A study of Ancient Egypt involving an empathetic study of an Egyptian tomb, taking on the roles of archaeologists, scribes, tomb painters and jewellers.
- **The Asian World:** A study of Ancient China, the terracotta warriors and Qin Shi Huang Di.





## GEOGRAPHY

**The study of Geography prepares students for adult life by developing an informed perspective on local and global issues. In so doing, it forms a basis for active participation in community life and a commitment towards ensuring that the environment is appreciated, enhanced and protected.**

Year 7 Geography enables students to understand and respond to changes taking place in environments and communities both in Australia and overseas. It urges students to accept community responsibilities and encourages positive attitudes about preservation, conservation and improvement of the Australian environment.

Year 8 Geography and History students will experience excursions, completing a Historical Site Study and Geographic Fieldwork.

**The two key topics in Year 7 are:**

- **Water in the World:** In this topic students examine water as a resource and the factors influencing water flows and availability. Students also investigate processes that continue to shape the environment including an atmospheric or hydrological hazard.
- **Place and Liveability:** This topic is about the features and characteristics of places and factors that influence liveability such as community identity, environmental quality and access to services.

# LANGUAGES

**Hornsby Girls are global citizens and value learning new languages for the challenge to see the world from a different perspective.**

**The school offers three languages to students in Years 7 to 10: French, German, and Japanese, and a fourth option to senior students: Spanish Beginners.**

We use contemporary teaching methods and offer the students diverse enrichment activities. Our students have visited Japan, France, Germany, and New Caledonia as a part of their study of languages at the school.

In Year 7 students are given the opportunity to learn introductory French, German and Japanese in 10-week courses.

In Year 8 they choose one of these languages to study for the whole year, fulfilling the state-mandated requirements for language study in NSW.

In Years 9 and 10, students are able to study up to two languages, including our HSC accelerated courses: French Beginners and German Beginners, as well as Stage 5 Japanese.

In Year 11 students may choose up to three languages, two Continuers subjects from French, German, and Japanese, provided they studied the language in Years 9 and 10. In addition to these, students may elect to study Spanish Beginners.

In Year 12 students are able to pick up Extension language subjects if they are studying the corresponding Continuers language course. Extension courses involve the study of an authentic text in the target language and the study of prescribed issues in society through the chosen language and culture.

Through learning new languages our students become more worldly and develop important cognitive skills in the process. We look forward to introducing the world to you.



# VISUAL ARTS

**Visual Arts at Hornsby Girls High School has a long-standing tradition as an intellectual, rigorous, yet enjoyable experience. Our Visual Arts students have an outstanding record of academic achievement and success. Many of our students use their Visual Arts education in the Senior School to gain high marks in the Higher School Certificate. They continue into university education and careers such as architecture, graphic design, advertising, film and television production, arts administration, arts academia, and design of all types, to name but a few.**

Year 7 students study Visual Arts for half a year (semester) for five periods per fortnightly cycle, taught by Visual Arts teachers in specialist Art rooms. During Year 7 they will develop skills, gain knowledge and understanding and investigate values and attitudes in a range of art experiences. They will design and make artworks, critically study art and design, as well as be able to place art and design works within their historical context.

Students will keep a Visual Arts Diary which will document all making and learning activities undertaken by students throughout the year. Regular assignments and worksheets will be presented in the Visual Arts Diary. Most materials for art making are supplied by the school.

Students will have opportunities to investigate subject matter in a range of areas including objects and other living things in Year 7. In the other years the themes are places and spaces, people, events and issues and theories. Students will use a variety of forms which may include painting, drawing, printmaking, design, sculpture and photography.



Year 7 students will also be provided with opportunities to exhibit and evaluate their art and design works in a safe and healthy work environment. Throughout the year each student will have their artworks on display.

The Visual Arts curriculum at Hornsby Girls High School is designed to present students with a variety of teaching/learning situations to maximise their understanding of the skills and the concepts presented to them.

## MUSIC

**Music is a compulsory subject for Stage 4 (Years 7 and 8).**

Students in Stage 4 participate in a wide variety of performance, composition and listening activities. Students at Hornsby Girls High School come from a range of musical backgrounds, so the course is designed allowing all students to participate at a level appropriate to their ability and experience.

Students develop their practical skills through playing percussion, keyboard, ukulele, guitar, bass and drums as well as singing. Students who already play an instrument are also given the opportunity to use these in some classroom activities. Styles range from popular, to classical, to music of different cultures.

Students are exposed to a vast array of musical styles and learn how to identify different features in the music both aurally and through looking at different forms of musical scores. Through developing an understanding of different forms of musical notation students develop a literacy that allows them to access music more easily.

This curriculum encourages creative problem solving and the development of critical thinking. The Visual Arts staff look forward to an interesting, challenging and enjoyable artistic experience with Year 7.



Composition and improvisation activities allow students a creative outlet and an opportunity to apply their musical understanding.

Students will compose in styles studied in class, both informally and traditionally, using notation. All students are provided with a subscription to the music notation program flat.io and also have access to the Music computers with Sibelius so they can compose with immediate aural feedback.

**Year 7 students are invited to join the following ensembles:**

- Year 7 Singers – open to all students and run after school.
- Beginner Band, Concert Band, Symphonic Band, Stage Band, String Orchestra and Wind Ensemble – Participation in all instrumental ensembles except Beginner Band is subject to a successful audition. Rehearsals are run before school.

Other opportunities to be involved in activities such as musicals, concerts and smaller auditioned ensembles may also become available during the year.

# TECHNOLOGY

**Technology engages students in design and production activities as they develop solutions to identified needs and opportunities.**

Through the practical application of knowledge and understanding they learn about Agriculture and Food Technologies, Digital Technologies, Engineered Systems and Material Technologies.

## **What will students learn in Technology in Year 7 and Year 8 at Hornsby Girls High School?**

The study of Technology in Years 7–8 enables students to become responsible users of technologies and designers of solutions.

Through the practical application of knowledge and understanding, students develop skills in the safe use of a range of technologies to design, produce and evaluate solutions to identified needs and opportunities.

### **The context in which students will apply their knowledge and skills will be:**

- Digital Technologies
- Agriculture and Food Technologies
- Engineered Systems
- Material Technologies.

Students will develop design and production folios, which will document the application of a design process and the specific technologies used in production.



A design and production folio may include ideas, sketches, drawings, experimentation, samples, research, photographs, details of construction and evaluation.

Students will undertake a range of practical experiences that occupy the majority of course time. The practical experiences allow students to develop skills and confidence in the use of a range of hand and machine tools.

### **Students will also learn thinking skills such as:**

- Computational thinking
- Design thinking
- Systems thinking.



# PHYSICAL EDUCATION HEALTH / PERSONAL DEVELOPMENT (PDHPE)

The study of PDHPE provides students with the opportunity to enhance and develop resilience and connectedness and learn to interact respectfully with others.

Through PDHPE students develop the skills to research, apply, appraise and critically analyse health and movement concepts in order to maintain and improve their health, safety, wellbeing and participation in physical activity.

Students are provided with opportunities to learn to critique and challenge assumptions, attitudes, behaviours and stereotypes and evaluate a range of health-related sources, services and organisations. They develop a commitment to the qualities and characteristics that promote and develop empathy, resilience, respectful relationships, inclusivity and social justice. Students practise, develop and refine the physical, cognitive, social and emotional skills that are important for engaging in movement and leading a healthy, safe and physically active life.

## HOUSES

There are four houses at Hornsby Girls, they are: **TURNER** named after Ethel Turner who wrote "Seven Little Australians". Turner house colour is yellow. **STEPHENS** named after Miss Ethel Stephens who was a successful artist. Stephens house colour is green. **COGHLAN** named after Dr Iza Coghlan, one of the first women graduates in medicine from Sydney University. Coghlan house colour is red. **SCOTT** named after Miss Rose Scott who made her life work the welfare of women and children. Scott house colour is blue.



Broken into three content strands which are Health, Wellbeing and Relationships, Movement Skill and Performance and Healthy, Safe and Active Lifestyles and five PDHPE Propositions which are informed by a strong evidence base to ensure that PDHPE is contemporary and future focused.

### Requirements

Navy shorts with school initials, navy and white top with school crest, white socks and sports shoes with supportive sole, navy school baseball cap, (hair tied back) and sunscreen. A school tracksuit is available and necessary for winter.

### Excursions

School carnivals, swimming, cross country, athletics, Year 7 Games Day, Year 8 Games Day and Year 10 Beach excursion.

### Extra-Curricular Activities

Students can participate in a wide range of extra-curricular activities. Some examples include: basketball, netball, taekwondo, soccer, yoga, dance, volleyball, zumba, water polo, fencing, badminton and aerobics. These activities and more take place after school at various times throughout the year.

### Sport

Students in Years 7 to 10 must participate in a Sports program as part of the School Curriculum. In Year 7 this is an integrated program with sporting activities held within the school grounds.

# HORNSBY GIRLS HIGH SCHOOL CO-CURRICULAR MUSIC PROGRAM

The Co-Curricular Music Program (CCMP) at Hornsby Girls High School is a vibrant program containing more than 40% of the student population at the school. It is run by the school music staff and compliments and enriches the music curriculum through dynamic ensembles that perform in eisteddfods, festivals, community and school events. The ensembles also regularly tour both regionally and internationally.

Whilst 2020 and 2021 have been atypical years in the ensembles, not even a pandemic has stopped our music making. Instead we have adapted by creating virtual ensembles, holding silent rehearsals, forming epic percussion ensembles and undertaking recording projects. We look forward to welcoming the 2022 Year 7 cohort to the Co-Curricular Music Program.

The ensembles for 2022 will be: Year 7 Singers, Junior Voices, Senior Choir, Hornsby Chorale, Beginner Band, Wind Ensemble, String Orchestra, Stage Band, Concert Band and Symphonic Band.

In addition there are a number of chamber ensembles available for the most advanced students including: Flute Quartet, Saxophone Quartet, Chamber Brass, Percussion Ensemble and Clarinet Quartet.

Students may join as many ensembles as they can fit into their schedule.



## **Beginner Band – Monday 7.15-8.30am**

A training band for all beginner players of woodwind, string, brass and percussion. Students in this ensemble are strongly encouraged to learn oboe, bassoon, french horn, trombone, euphonium, tuba or viola as these are the instruments with the most opportunities in the ensembles.

## **Hornsby Chorale – Monday 3.15-4.30pm**

A chamber choir for the most accomplished singers in the school (Years 8-12 only). All positions are auditioned.

## **Stage Band – Tuesday 7.15-8.30am**

A big band open to students in either Concert Band or Symphonic Band by audition/invitation only.

## **Junior Voices – Tuesday 7.15-8.30am**

An open choir for all abilities (Years 8-9). All CCMP members in Years 8-9 are encouraged to join this ensemble.

## **Year 7 Singers – Tuesday 3:15 -4:30pm**

A Year 7 choir for all abilities. All CCMP members in Year 7 are encouraged to join this ensemble.

**String Orchestra – Wednesday 7.15-8.30am**

An open ensemble to all experienced string players (Years 7-12). Auditions are required to place students appropriately within the ensemble.

**Wind Ensemble – Thursday 7.15-8.30am**

An ensemble for intermediate level wind, string and percussion players. Auditions are required to place students appropriately within this ensemble.

**Symphonic Band – Thursday 7.15-8.30am**

An auditioned band for advanced woodwind, brass & percussion players.

**Senior Choir – Friday 7.15-8.30am**

An open choir for all abilities (Years 10-12). All CCMP members in Years 10-12 are encouraged to join this ensemble.

**Concert Band – Friday 7.15-8.30am**

An auditioned band for intermediate to advanced woodwind, brass & percussion players.

**Sign up and Auditions**

Any student who wishes to be a member of an ensemble in 2022 is asked to fill in the following Google Form:

<https://forms.gle/K152fdVvawsxMWyd6>

Wind Ensemble, String Orchestra, Stage Band, Concert Band and Symphonic Band all require an audition for entry. If you are interested in auditioning for one of the ensembles, you are asked to make a video recording of yourself playing. The video should include a scale that demonstrates your range and technique, a 1 minute excerpt of any piece of music that demonstrates your ability as a player and an excerpt from an ensemble piece which will be provided for you.

A **Google Classroom** has been set up for you to join which contains the excerpts to prepare and is also where you should post your video. You can access the Google Classroom through the Department of Education student portal. You will need to join using the **class code: rdwvp6j**.

If you are not currently enrolled at a Department of Education school or do not know how to access your Student Portal, please email [lara.sholl@det.nsw.edu.au](mailto:lara.sholl@det.nsw.edu.au) for assistance.





### **Fee Structure**

The Co-Curricular Music Program is self-funding. The 2022 costs for annual membership in the Co-Curricular Music Program is \$500 per year for the first instrumental ensemble, \$300 for choirs, \$100 for any additional ensemble/s and participation in a choir is free if you are part of an instrumental ensemble. Fees cover the cost of conductors, music, equipment and entry into competitions and festivals.

### **Instruments Required and Hire Fees**

HGHS usually has a large number of flute players and are short of brass players. Players are needed to learn the following instruments: bassoon, bass clarinet, baritone saxophone, oboe, French horn, trombone, euphonium, tuba and viola. Please indicate on your expression of interest form (see Google Form link above) if you are interested in playing any of these much needed instruments. All of these instruments except viola can be hired from the school. The hire fee is \$250 plus a \$300 refundable deposit. An instrument usage fee of \$45 will be charged to all keyboard and percussion players for the maintenance of the instruments used at school.

### **Private Lessons**

All members of instrumental ensembles are expected to have private lessons on their instruments until they have reached a minimum of AMEB 6th Grade or equivalent. Due to a lack of space at the school, most lessons must be arranged by the individual outside of school. A link to a list of tutors can be found in the Co-Curricular Music Handbook available on our school website.

### **Performance Uniform**

CCMP uniform is school (navy blue) pants with school initials and white winter shirt with school initials (senior shirt).



### **Co-Curricular Music Activities include:**

- Eisteddfods & festivals
- International Tours
- Regional Tours
- Workshops with professional ensembles and tutors
- Community Concerts
- Two major school concerts per year
- School Functions e.g. Speech Day, Prefect Induction, Orientation Day, Year 12 Graduation.

If you have any further questions about the Co-Curricular Music Program, please see the Co-Curricular Music Handbook available on our school website, or email the Co-Curricular Music Coordinator Mrs Lara Sholl [lara.sholl@det.nsw.edu.au](mailto:lara.sholl@det.nsw.edu.au).

Thank you for your support of the Co-Curricular Music Program. We look forward to meeting you.

**Mrs Lara Sholl – Co-Curricular Music Coordinator and Instrumental Conductor**  
**Ms Nadia McCarthy - Choir and Instrumental Conductor**  
**Mrs Susie Sutcliffe – Choir and Instrumental Conductor**



# STUDENT PROGRESS

Student progress is measured by progressive assessment throughout the year. In most subjects homework, assignments and projects will be used for assessment as well as class tests, topic tests and practical work.

Semester 1 and Semester 2 reports are issued to parents, based on a combination of classwork and class assessments.

Parent Teacher interviews are held mid-year.



# HOMEWORK

Homework will be set for students in Year 7 on a regular basis. It is generally believed that an average student, with good organisation of time and resources, should spend one hour a night in Year 7 on homework.

**Homework may take various forms. Some of these include:**

1. Preparation for future lessons, e.g. research, assignments and reading.
2. Preparation for tests and assessments.
3. Review of work covered in class.
4. Short assignments set on a frequent basis.
5. Longer assignments set on a less frequent basis.

Parents are encouraged to take an active interest in the amount of homework set and when it is due. They are also urged to support and assist but not to complete homework.

## The Importance of a Study Program

Students should formulate a weekly study program. This will allow for:

- **Parity of subjects** - Students are encouraged to think of each subject as having equal value and therefore to devote equal time and effort to each subject.
- **Mapping out** - Those times when short homework assignments, which are set on a regular basis, can be completed and balanced against work on larger, less regular assignments and student-initiated study.



# ENRICHMENT ACTIVITIES

The following activities are offered at Hornsby Girls High School to provide a broad range of experiences and opportunities for our students.

## Aerobics

- Teams and Individual Events
- State and National Competitions.

## Art and Design

- HSC Visual Arts Exhibition
- Hornsby Girls High School Art Exhibition
- Additional activities may include:
  - ceramics
  - digital photography
  - drawing
  - oil painting
  - realistic painting
- School Magazine - Minerva
- GAT Workshops.

## Building Strength

Year 11 Positive Education Program.

## Business Studies

- Business Educators Australasia "Plan Your Own Enterprise" Competition
- University of Newcastle Year 11 Business Plan Challenge
- UBS Women in Leadership Program.

## Cafe Gratitude

Barista training and operation of school cafe.

**Camps** in Years 7, 9 and 11.

## Charity Fundraising may include:

- Anglicare "Toys 'n Tucker" Christmas appeal
- Bandaged Bear Day - Westmead Children's Hospital
- Cancer Council
- Guide Dog Association
- Hornsby Women's Shelter
- Indigenous Literacy Foundation
- Jeans for Genes Day
- Jump Rope for Heart
- Legacy Badge Day
- MS Readathon
- National Heart Foundation Valentine's Day Appeal
- Pink Ribbon Day - Breast Cancer Research
- Purple Ribbon Campaign *Unifem*
- Red Cross Blood Donor Appeal
- Salvation Army Red Shield Appeal
- Stewart House
- UN Women
- World's Greatest Shave - Leukaemia Foundation
- 40 Hour Famine - World Vision.



### Chess Club

- Inter-School Competitions
- Outdoor chess board in COLA Area.

### Choir

- House Choir Competition
- Year 7 Singers, Junior Voices, Senior Choir and Hornsby Chorale
- NSW Schools Spectacular.

### Commerce

- Australian Securities Exchange Competition
- \$20 Boss Competition
- Commonwealth Bank Financial Literacy Program
- Young Lawyers – guest Speaker Program.

### Dance

- Regional and State Festivals
- Talented Dance Ensembles – Three dance groups
- Various Eisteddfods.

### Debating

- Premier's Debating Challenge - Years 7-12
- Social Debating Years 7 and 8
- Year 11 Metro Debating Competition
- Also see PUBLIC SPEAKING.

### Digital Leadership – Years 9 and 10.

### Drama

- After-School Drama Enrichment Classes
- Hornsby Girls High School Student Performance Evenings
- Junior and Senior State Drama Ensembles
- Regional and State Drama Festivals
- School Musical – alternate years (with Normanhurst BHS).

### Driver Education Program

- Year 11 RYDA Driver Education Program.

### Duke of Edinburgh Award\_

- Bronze, Silver and Gold Levels.

### English

- UNSW Global REACH English Competition
- Dorothea MacKellar Poetry Competition
- Film Making Competition – short films, animations and video games
- Hornsby Girls High School Writing Competition – sponsored by the HGHS Old Girls' Union
- Publication of Burning Bright – student writing magazine
- Writing Competitions advertised through the Year:
  - Guringai Festival Reconciliation Writing Competition
  - What Matters Writing Competition
  - Write Now! Competition
- Also see DRAMA.



## Enterprise Challenge

Year 10 program combined with Normanhurst Boys.

## Environment

- **FRED** (Friends of Recycling, the Environment and Dirt) Student-initiated and student-managed environmental group
  - Clean Up Australia Day activities
  - Earth Hour
  - Paper Recycling Program across the school
  - Plant-A-Tree Day
  - Recycling of soft plastic
  - Students participating in P&C Grounds Days.
- **SEMP** (School Environmental Management Plan) Committee.

**Excursions and other visits** - in most Faculties.

## Geography

- Australian Geography Competition
- Geography Teachers Association Fieldwork Competition
- Year 8 History/Geography Camp.

## Grit Factor

Year 12 Positive Education Program.

## Harmony Day

Intercultural understanding and co-operation.

## High Resolves

Global Citizenship – Years 7–10.

## Highlite - Christian Fellowship Group.

## History

- HSC Extension History Prize
- National History Challenge
- NSW National Trust Heritage Competition
- Simpson History Prize
- Year 10 Vietnam Day
- Year 8 Medieval Day
- Year 8 History/Geography Camp.

## Languages

(French, German, Japanese, Spanish)

- Education Perfect World Championships.

## Library

- Book reviews for Oliver Library Management System
- Library Monitors
- Premier's Reading Challenge
- Visiting authors as guest speakers
- Year 7 Book Club
- Year 8 Book Club
- Years 9/10 Book Club.



### Leadership - Within the School:

- Prefect System - portfolio structure
  - Travel Prefects - for assistance travelling to/from school
- Student Representative Council (SRC)
- SWL (Year 10 Student Wellbeing Leaders)
- House System
  - House Captains
  - House Sports Captains and Vice Captains
  - House Music Captains and Vice Captains
- Peer Support Program – Student leadership in Year 6-7 Transition Program and whole school Wellbeing Program
- Year group Charity Fundraising Activities
- Duke of Edinburgh Award
- Macquarie University Enterprise Challenge (Year 10)
- Work Experience (Year 10)
- Games Day Leaders
- Year 12 Masterclasses
- School Ambassadors - school tour guides
- HGHS Social Justice Group
- School Annual Magazine - Minerva
- House Choir Competition
- Lip-sync - Student Charity Concert
- Year 12 Jersey Committee.

### External Leadership Opportunities

- Australian Youth Development Student Leadership conference

- Director-General's Award for Excellence in Student Achievement
- Future Leaders Conference - Halogen
- International Women's Day Functions
- Long Tan Awards for Leadership and Teamwork
- Minister's Award for Excellence in Student Achievement
- Model United Nations Assembly - Rotary
- National Young Leaders Day
- Student Leadership Program for School Captains/Vice Captains - NSW Government
- Student Representative Council - District/Regional/State Levels
- UBS Finance Academy - Macquarie University
- UBS Young Women's Leadership Academy - Sydney University
- United Nations Youth Association State Conference
- Women's Student Leadership Seminars - Women's College, Sydney University
- Young Achievement Australia Business Skills Program
- Young Australian of the Year
- Young Women's Leadership Seminar - NSW Parliament House
- Youth of the Year Quest - Hornsby Lions Club
- Youth Parliament - NSW YMCA
- Zonta Young Women in Public Affairs Award.



## Mathematics

- Australasian Problem Solving Mathematical Olympiad (APSMO)
- Australian Mathematics Competition
- Mathematics Challenge for Young Australians – Challenge and Enrichment Problems.

## Minerva Magazine

Annual School Magazine.

Model United Nations Assembly (MUNA)

## Mock Trial

NSW Law Society Interschool Mock Trial.

## Mooting Competition

Western Sydney University.

## Music

- Beginner Band
- Chamber Ensembles
- Choirs – Year 7 Singers, Junior Voices, Senior Choir and Hornsby Chorale
- Concert Band
- Eisteddfods
- NSW Schools Spectacular
- Regional and International Music Tours
- School Musical – alternate years (with Normanhurst BHS)
- Sydney Eisteddfod
- Stage Band
- State Music Camps - Junior & Senior

- State Schools Instrumental and Vocal Ensembles
- String Orchestra
- Student Performance Evenings
- Symphonic Band
- Wind Ensemble.

## Peer Support Positive Education Program

Transition to High School Program for Year 7 - led by Year 10 Student Leaders, delivering Wellbeing Programs through SWL-Being activities.

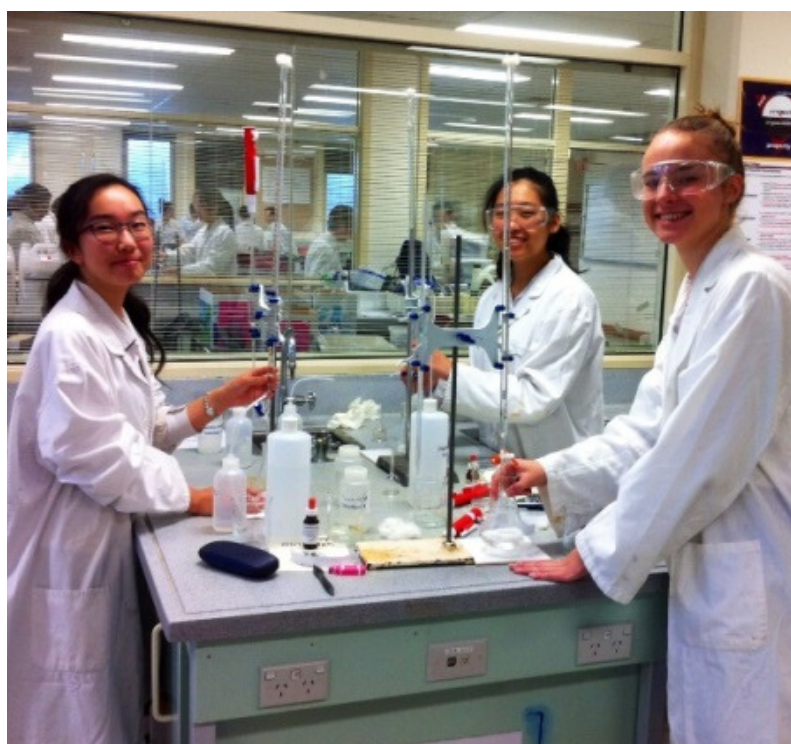
## Public Speaking

- English Plain Speaking Award
- Legacy Junior Public Speaking Competition
- Rostrum Voice of Youth Competition
- UN Youth Evatt Public Speaking Competition.

## Running Club

## Science

- Australian Science Olympiad – Biology, Chemistry and Physics
- FIRST Lego League Robotics
- FIRST Tech Challenge Robotics
- National Youth Science Forum
- RACI Chemistry Quiz
- RACI Titration Competition
- Science & Engineering Challenge (Year 10)
- UNSW ICAS Science Competition.



**Sister-School Relationship – Shukutoku Yono, Japan.**

### **Social Justice Group**

- Birth Kit Foundation fundraiser
- High Tea for Hamlin
- Immediate disaster relief fundraising
- International Women's Day Breakfast
- Support the Girls fundraiser
- Uplift Bra Program
- World Vision 40 hour famine.

### **Spirit Week**

Last week of Term 2, School Spirit activities organised by the SRC.

### **Sport**

- Year 7 & Year 8 Games Days
- Entry to Zone/Regional/State/National Competitions as appropriate
- **Tournaments** - many of the teams have specialist external coaches:
  - Aerobics, Athletics
  - Badminton, Basketball
  - Cricket, Cross Country
  - Fencing
  - Netball
  - Oz Tag
  - Rowing
  - Snowboarding, Soccer, Softball, Swimming
  - Tennis, Touch Football, Table Tennis
  - Volleyball.

### • **Extra-curricular Sport** - seasonal:

- Aerobics, Athletics Training
- Basketball
- Cricket, Cross Country Training
- Dance
- Football
- Netball
- Oz Tag, Soccer
- Table Tennis Club, Taekwondo, Tennis, Touch
- Volleyball, Water Polo, Yoga.

### • **Senior Fitness Room** – training and registration required.

### **SWL-Being**

Positive Education Program lead by Year 10 Student Wellbeing Leaders incorporating mindfulness and other elements of positive psychology.

### **Technology and Applied Studies (TAS)**

- McCormick Flavour Challenge National Food Technology competition Stage 5
- Wool 4 Schools National Textiles and Design Competition Stage 5.

### **Tournament of Minds**

### **Year 12 Subject Masterclasses**

In preparation for HSC Examinations top ranking students in each subject offer advice, address key concepts and answer questions in student-led afternoon sessions.





# WHERE DO I FIND THAT?

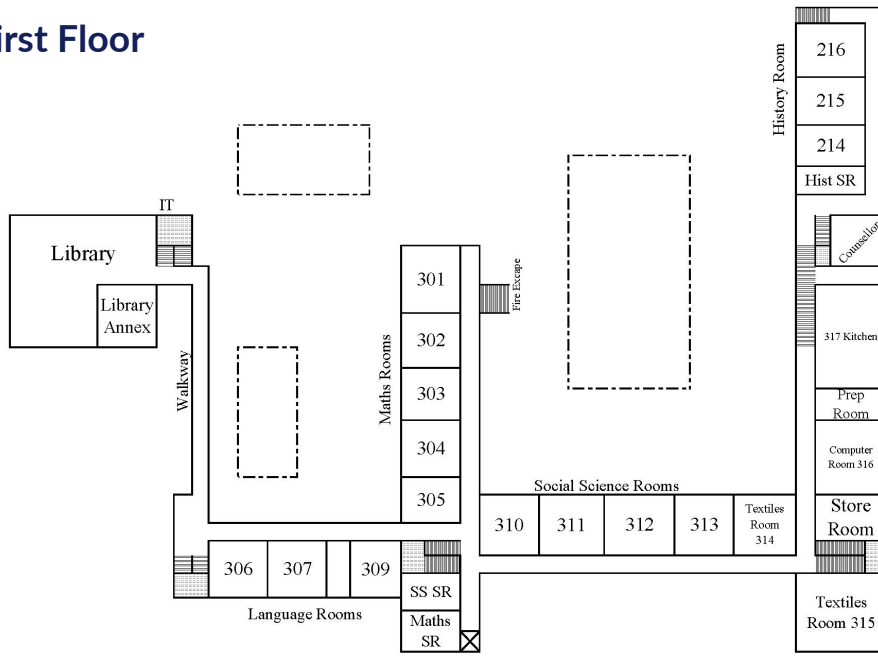
Mark the numbers in the appropriate places on the school map. Your Peer Supporter will show you the places as you walk around the school.

1. Principal's Office - Dr J Briggs
2. Deputy Principals' Office - Dr S Green and Mr D Marshall
3. Head Teacher Student Wellbeing's Office - Ms A Wallwork
4. Year 7 Student Adviser – Ms M Koumoundouros
5. Reception – Visitors and sick students
6. Office - Room 209 - All student enquiries including: banking, lost property, student attendance, transport enquiries, early leavers, and late arrivals.
7. Where my Peer Supporter will meet me at recess/lunchtime.
8. My bus stop, for going home (if I catch a bus) - remember school finishes at 2:40pm on Wednesdays.
9. Canteen
10. Toilets
11. Staffrooms - English  
History  
Technological and Applied Studies  
Languages  
Mathematics  
Music  
PD/Health/PE  
Social Sciences  
Science  
Visual Arts
12. Staff Common Room
13. Library
14. School Counsellor's Office
15. PE Change Rooms
16. Agnes Brewster Memorial Hall
17. Clothing Pool
18. Your locker
19. Tennis Courts entrance gate. (No food in the court area, wear sport shoes on the tennis courts)



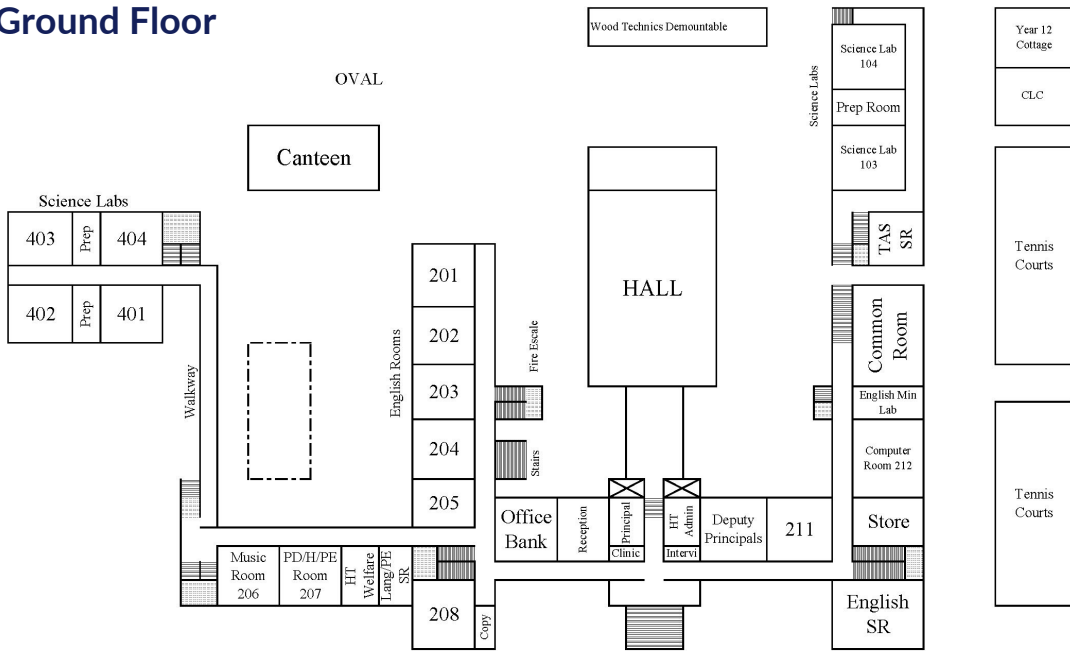
# HORNSBY GIRLS HIGH SCHOOL MAP

## First Floor



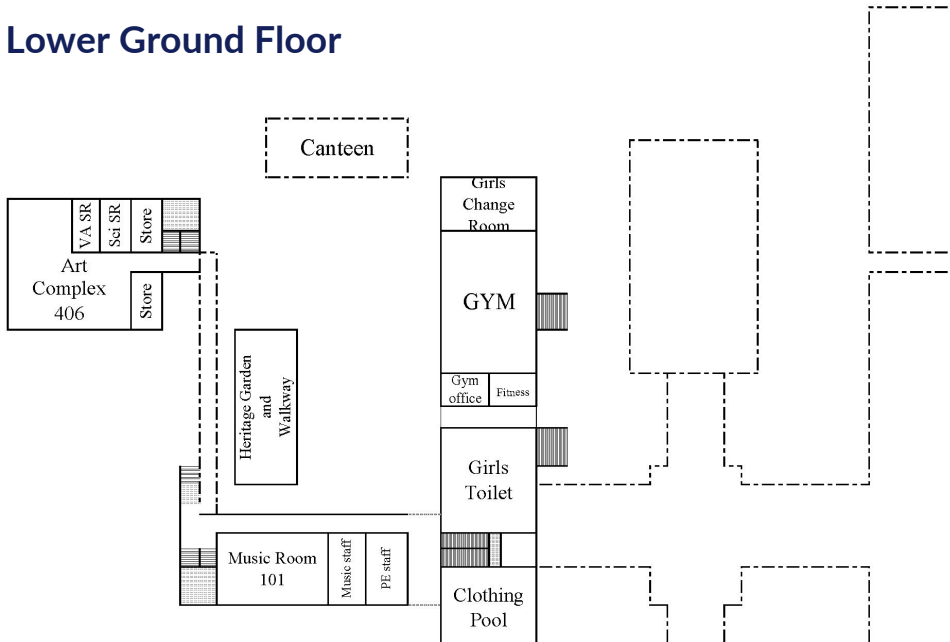
Edgworth David Ave

## Ground Floor



Edgworth David Ave

## Lower Ground Floor



# Calendar 2022



S	M	T	W	T	F	S
30	31					1
2	3	4	5	6	7	8
9	10	11	12	13	14	15
16	17	18	19	20	21	22
23	24	25	26	27	28	29

S	M	T	W	T	F	S
		1	2	3	4	5
6	7	8	9	10	11	12
13	14	15	16	17	18	19
20	21	22	23	24	25	26
27	28					

S	M	T	W	T	F	S
		1	2	3	4	5
6	7	8	9	10	11	12
13	14	15	16	17	18	19
20	21	22	23	24	25	26
27	28	29	30	31		

S	M	T	W	T	F	S
						1 2
3	4	5	6	7	8	9
10	11	12	13	14	15	16
17	18	19	20	21	22	23
24	25	26	27	28	29	30

S	M	T	W	T	F	S
1	2	3	4	5	6	7
8	9	10	11	12	13	14
15	16	17	18	19	20	21
22	23	24	25	26	27	28
29	30	31				

S	M	T	W	T	F	S
			1	2	3	4
5	6	7	8	9	10	11
12	13	14	15	16	17	18
19	20	21	22	23	24	25
26	27	28	29	30		

S	M	T	W	T	F	S
31					1	2
3	4	5	6	7	8	9
10	11	12	13	14	15	16
17	18	19	20	21	22	23
24	25	26	27	28	29	30

S	M	T	W	T	F	S
	1	2	3	4	5	6
7	8	9	10	11	12	13
14	15	16	17	18	19	20
21	22	23	24	25	26	27
28	29	30	31			

S	M	T	W	T	F	S
				1	2	3
4	5	6	7	8	9	10
11	12	13	14	15	16	17
18	19	20	21	22	23	24
25	26	27	28	29	30	

S	M	T	W	T	F	S
30	31					1
2	3	4	5	6	7	8
9	10	11	12	13	14	15
16	17	18	19	20	21	22
23	24	25	26	27	28	29

S	M	T	W	T	F	S
						1 2 3
4	5	6	7	8	9	10
11	12	13	14	15	16	17
18	19	20	21	22	23	24
25	26	27	28	29	30	

S	M	T	W	T	F	S
						1 2 3
4	5	6	7	8	9	10
11	12	13	14	15	16	17
18	19	20	21	22	23	24
25	26	27	28	29	30	31

## Key dates

### Term start and end dates\*

Term 1 (Eastern) – 28 Jan to 8 Apr 2022

### Term 1 (Western) – 4 Feb to 8 Apr 2022

Term 2 – 26 Apr to 1 July 2022

Term 3 – 18 July to 23 Sept 2022

Term 4 – 10 Oct to 20 Dec 2022

### School development days

Term 1 (Eastern) – 28 Jan and 31 Jan 2022

Term 1 (Western) – 4 Feb and 7 Feb 2022

Term 2, 3 and 4 – 26 April, 18 July and 20 Dec 2022

### School vacation dates 2022

Summer (Eastern) – 20 Dec 2021 to 27 Jan 2022

### Summer (Western) – 20 Dec 2021 to 3 Feb 2022

Autumn – 11 Apr to 22 Apr 2022

Winter – 4 July to 15 July 2022

Spring – 26 Sept to 7 Oct 2022

Summer (Eastern) – 21 Dec 2022 to 26 Jan 2023

Summer (Western) – 21 Dec 2022 to 2 Feb 2023

### Education Week

1-5 August 2022

### Exam dates

Selective high school placement test – 10 Mar 2022

NAPLAN online test window – 10 to 20 May 2022

Opportunity class placement test – 28 July 2022

### Public holidays



### Scan me for practical school tips!

To help your child get the most out of their school year and to explore our resources, check out our back to school hub at [education.nsw.gov.au/back-to-school](https://education.nsw.gov.au/back-to-school)

School zone speed limits apply on all school days, including school development days.



\* Check with your school as starting and finishing dates may change.